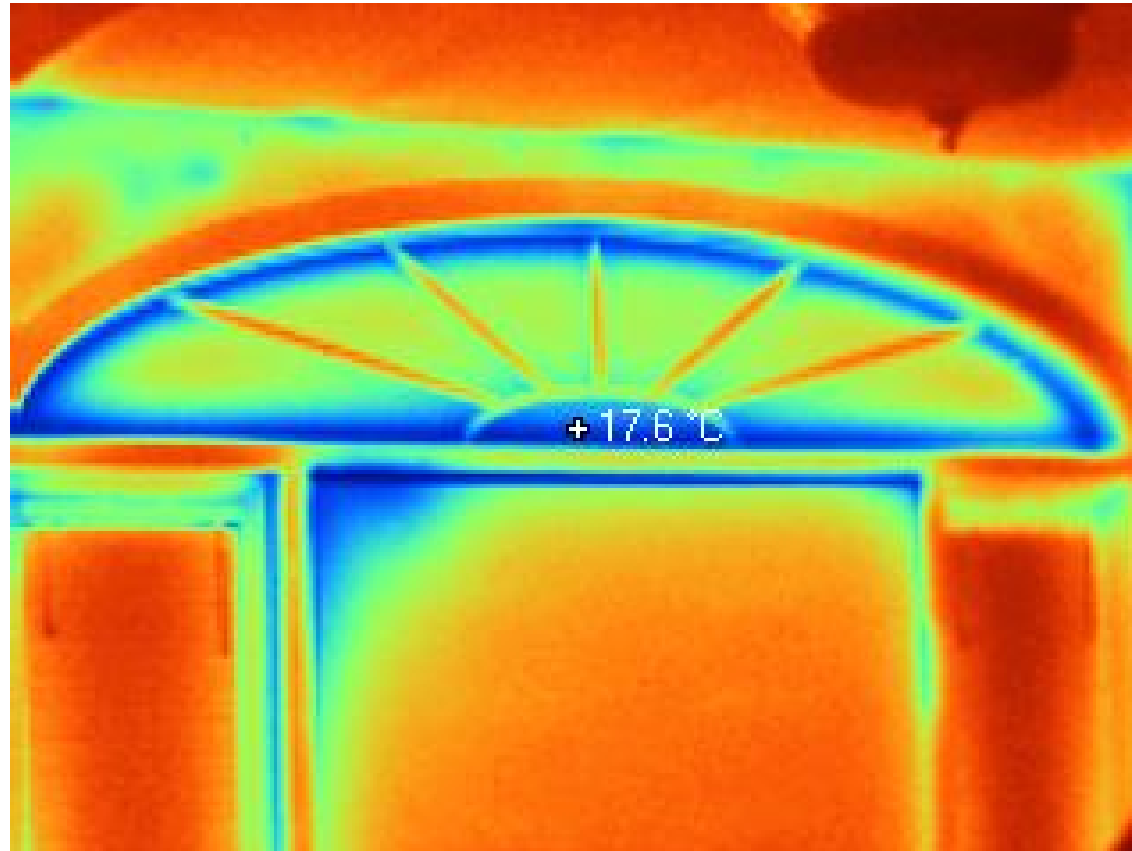
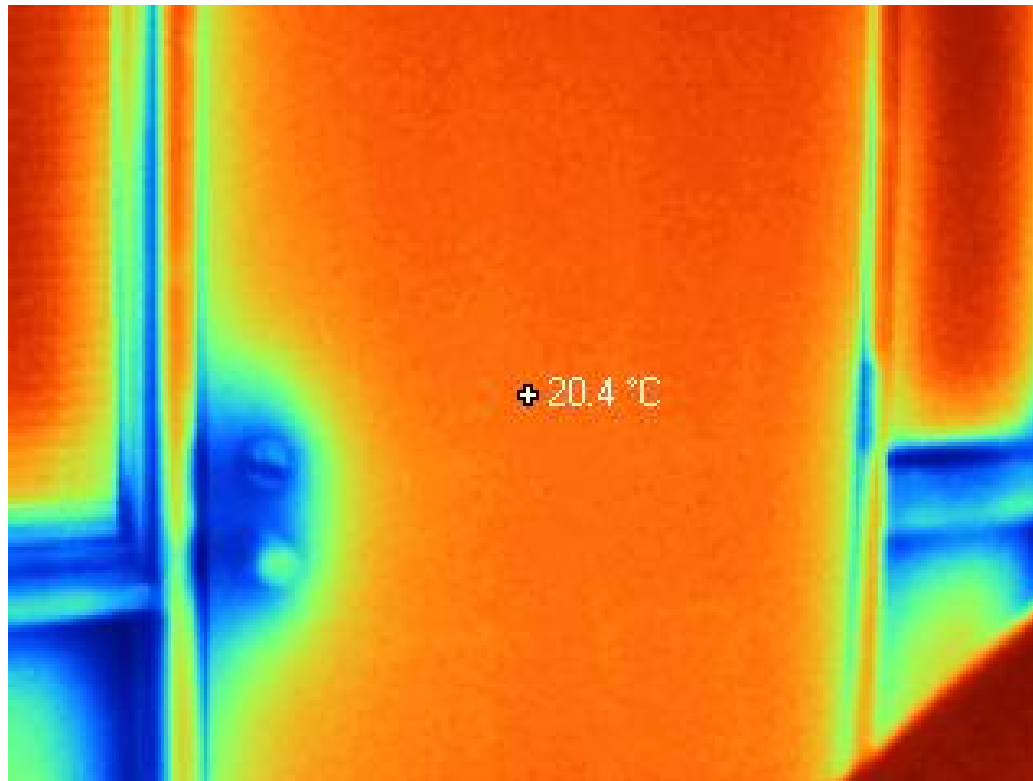


Infrared Thermography in the  
Dumont Residence  
March 2006

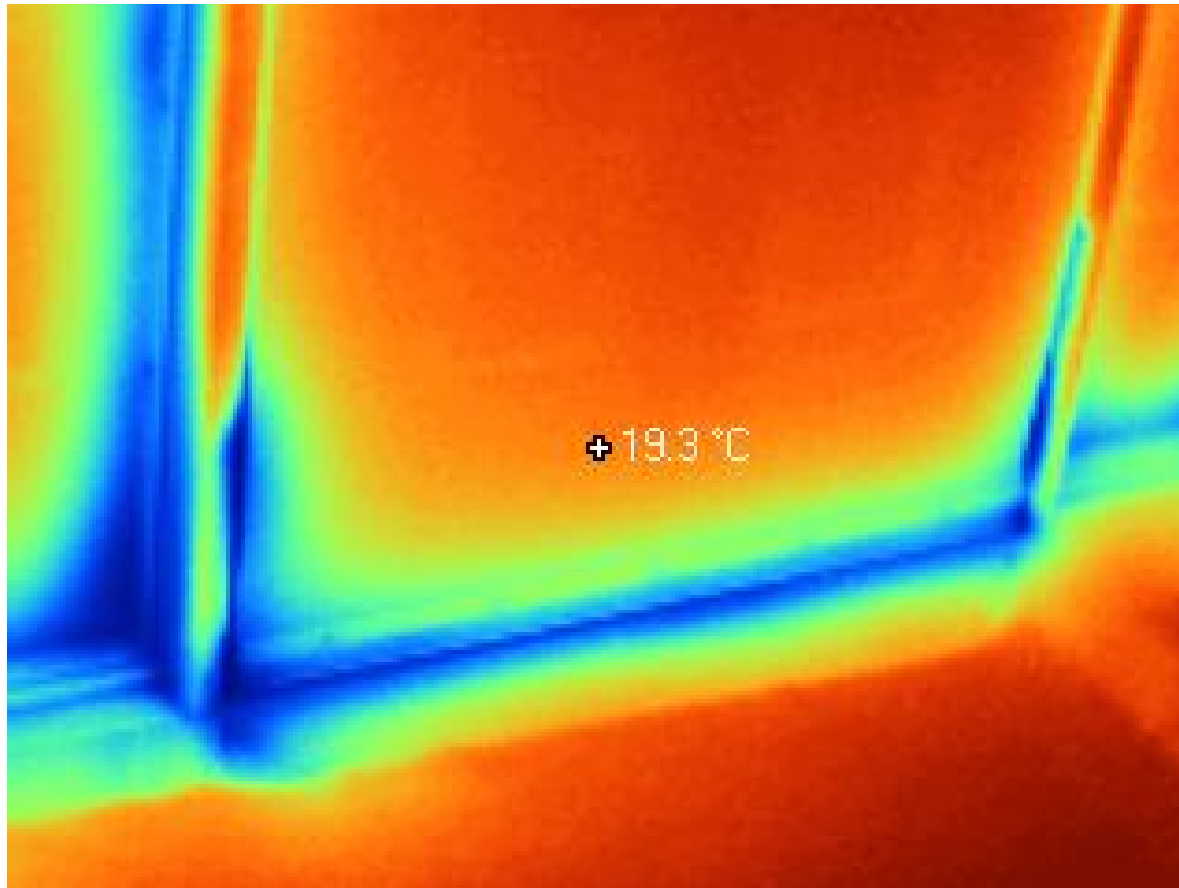
# Fanlight over Front Door



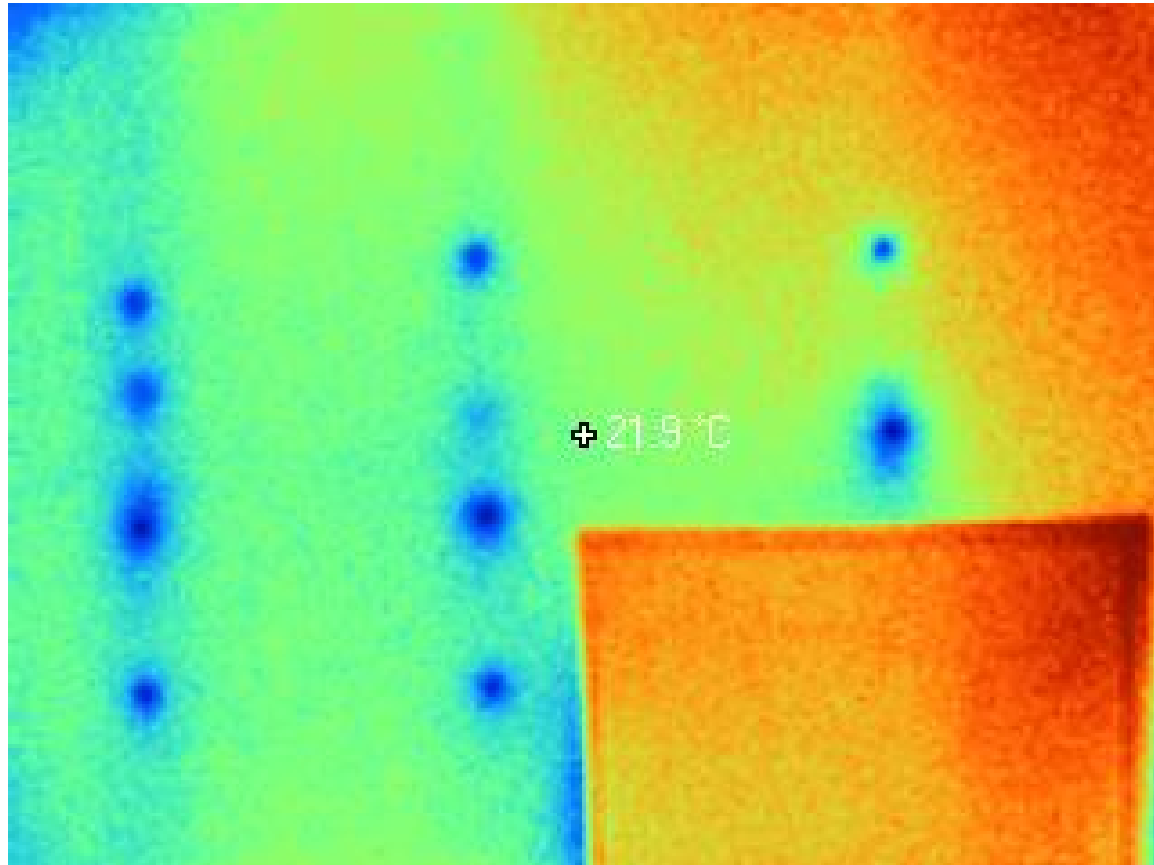
# Front Door Locks



# Bottom of Front Door



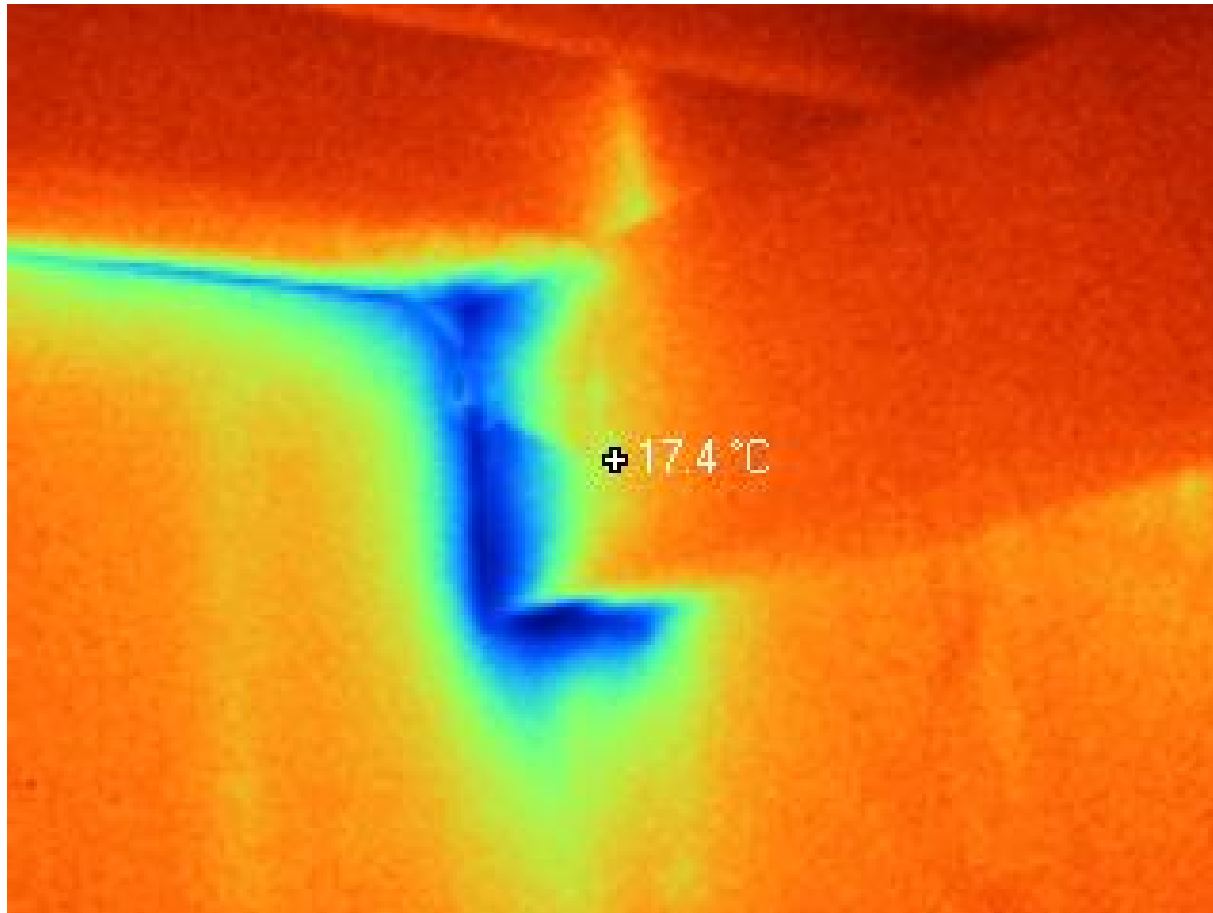
# Drywall Screws in the North Wall



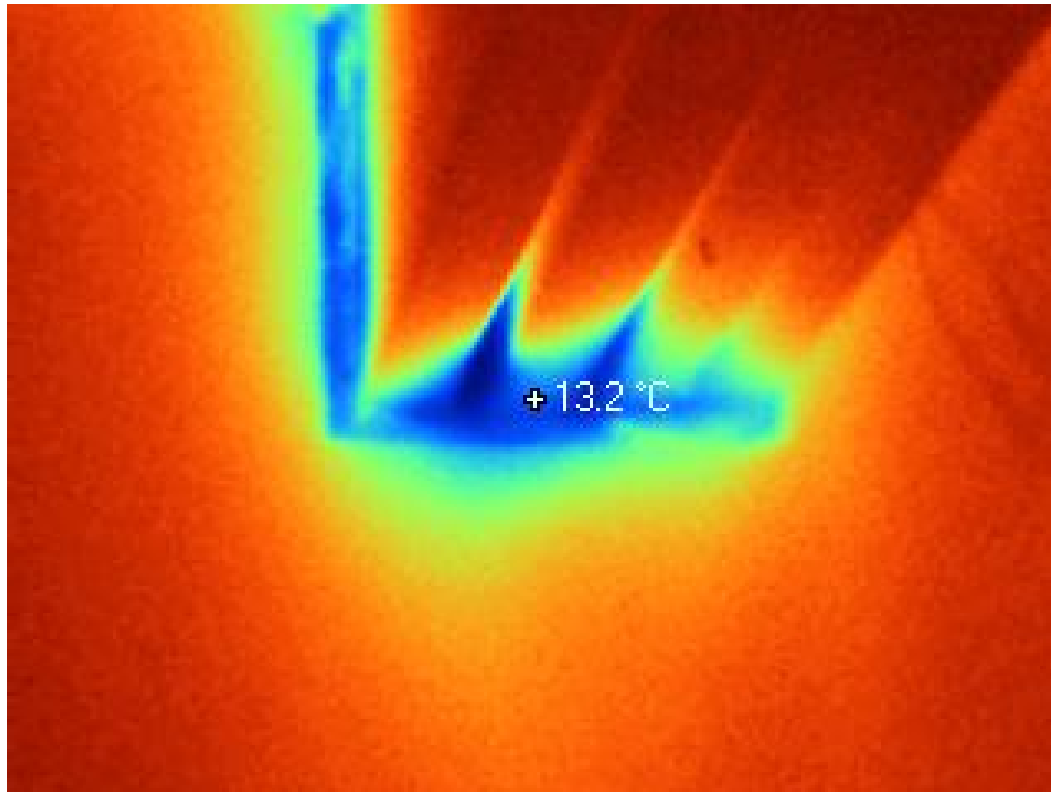
# People doing Dishes



# Built up beam supporting main floor joists

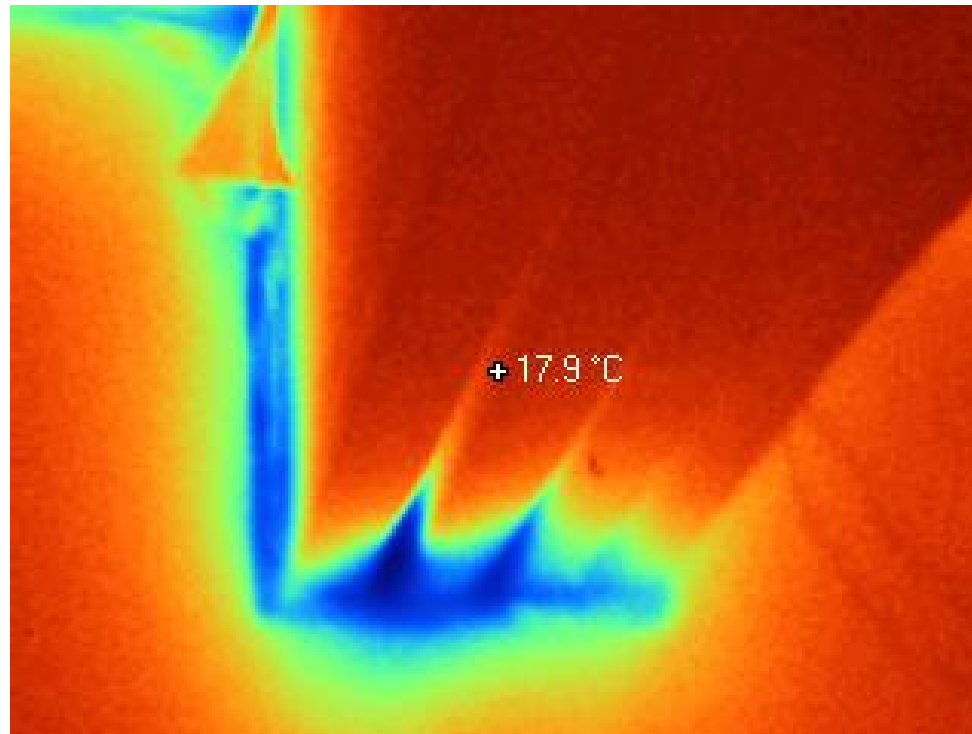


Air leakage through spaces  
between built up 2 x 10 beam

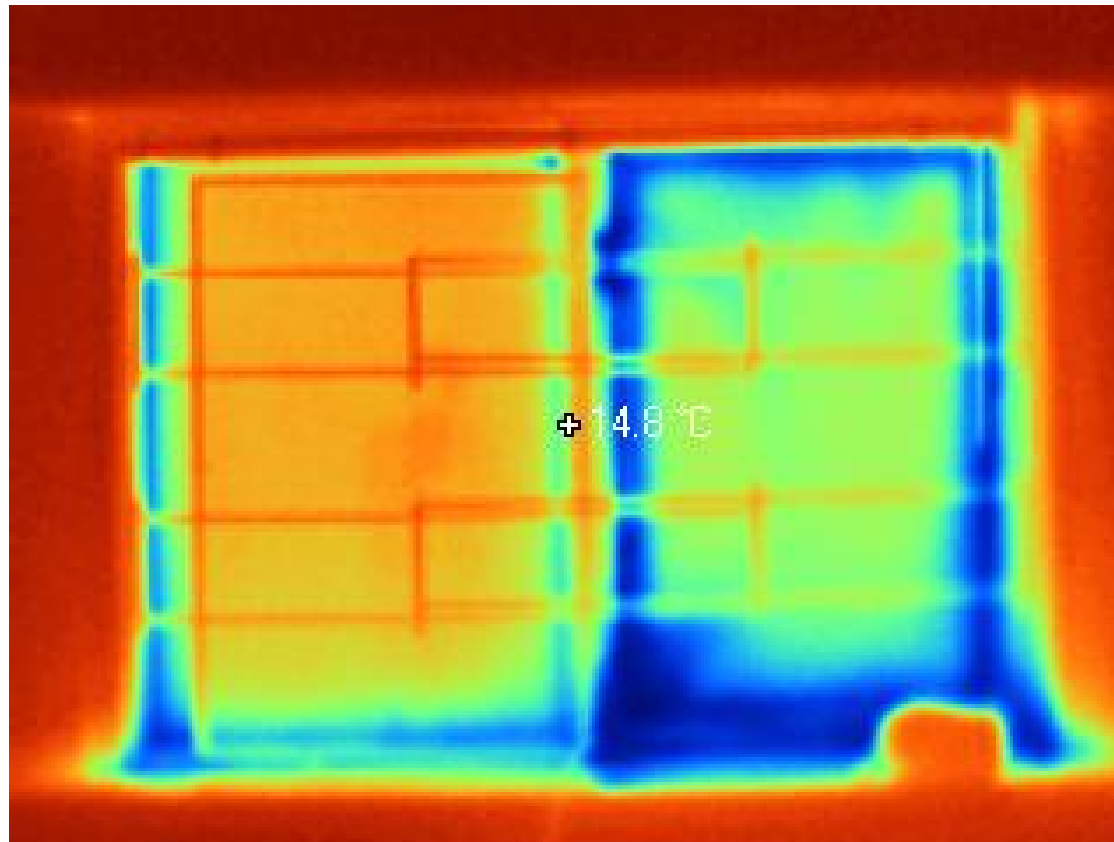




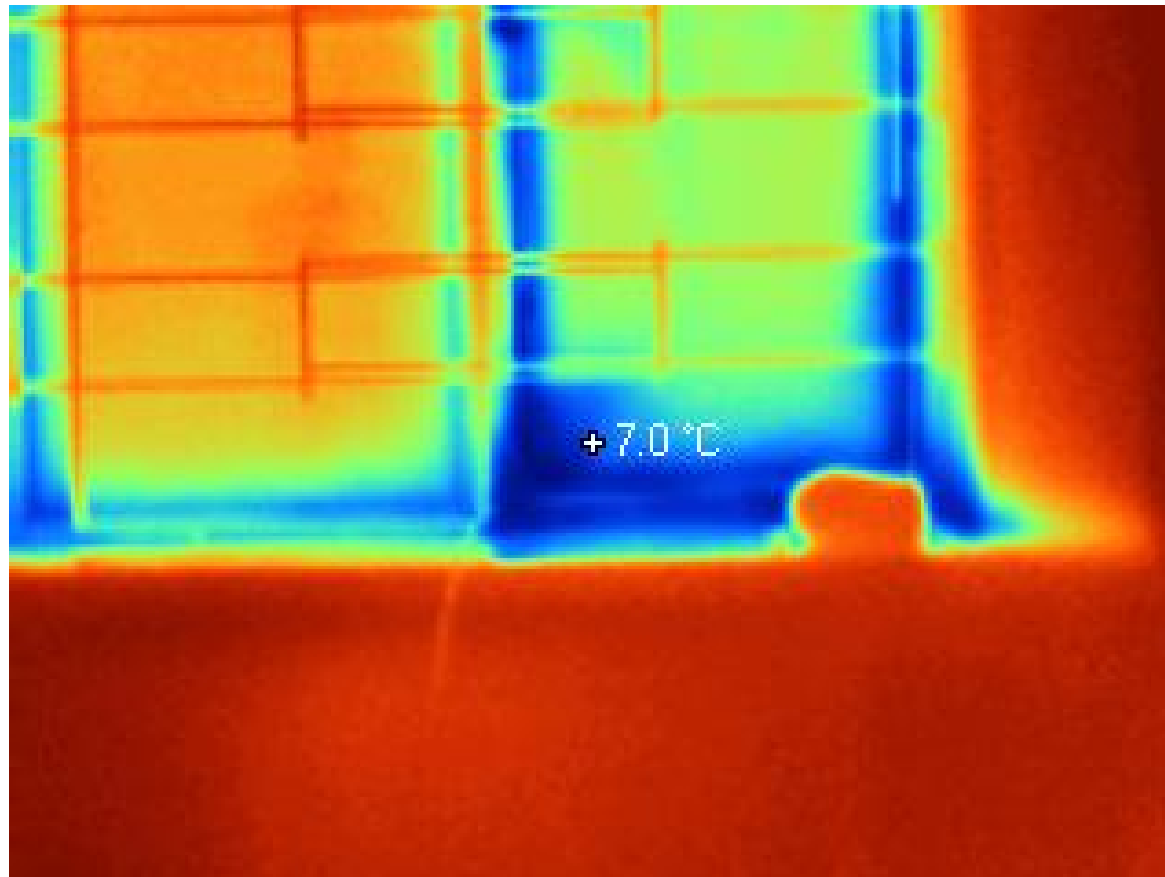
# Surface Temperature Measurement on beam



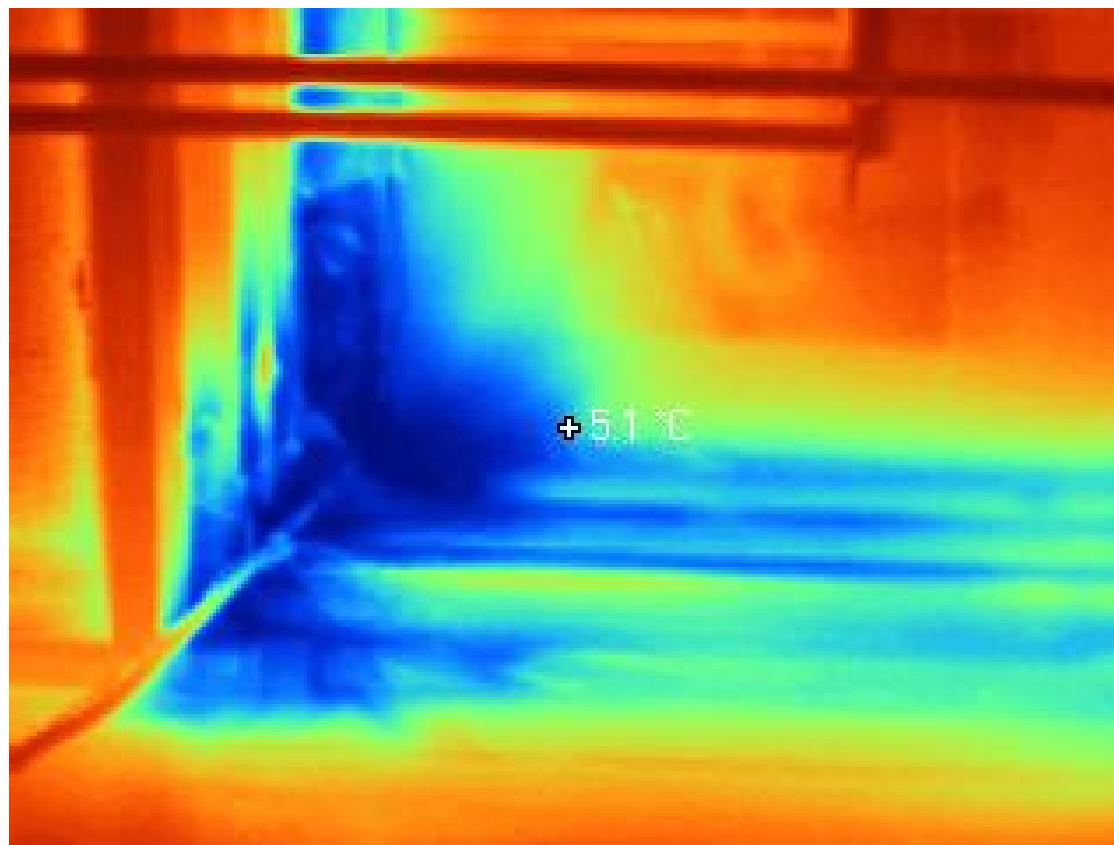
# Leaky Casement Window on Right (caused by poor closure of window)



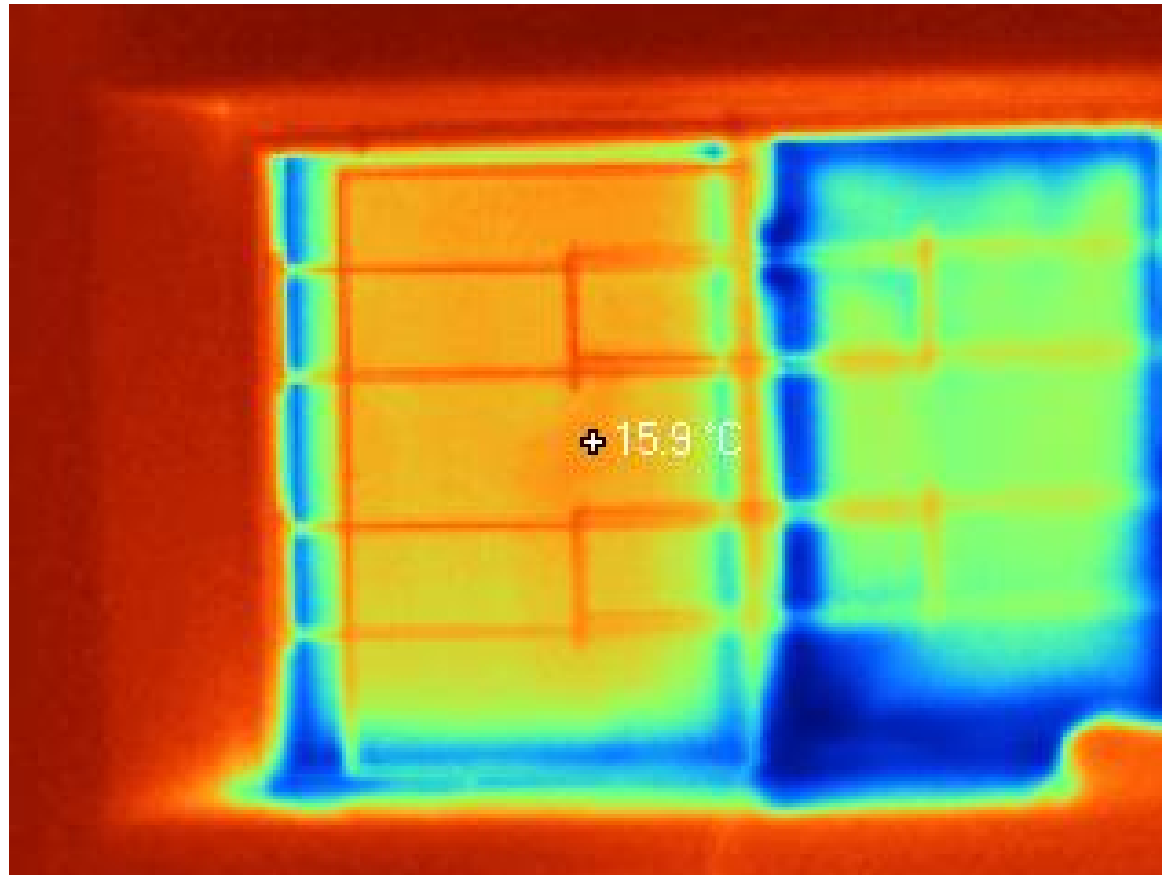
Note cold temperature at base of window



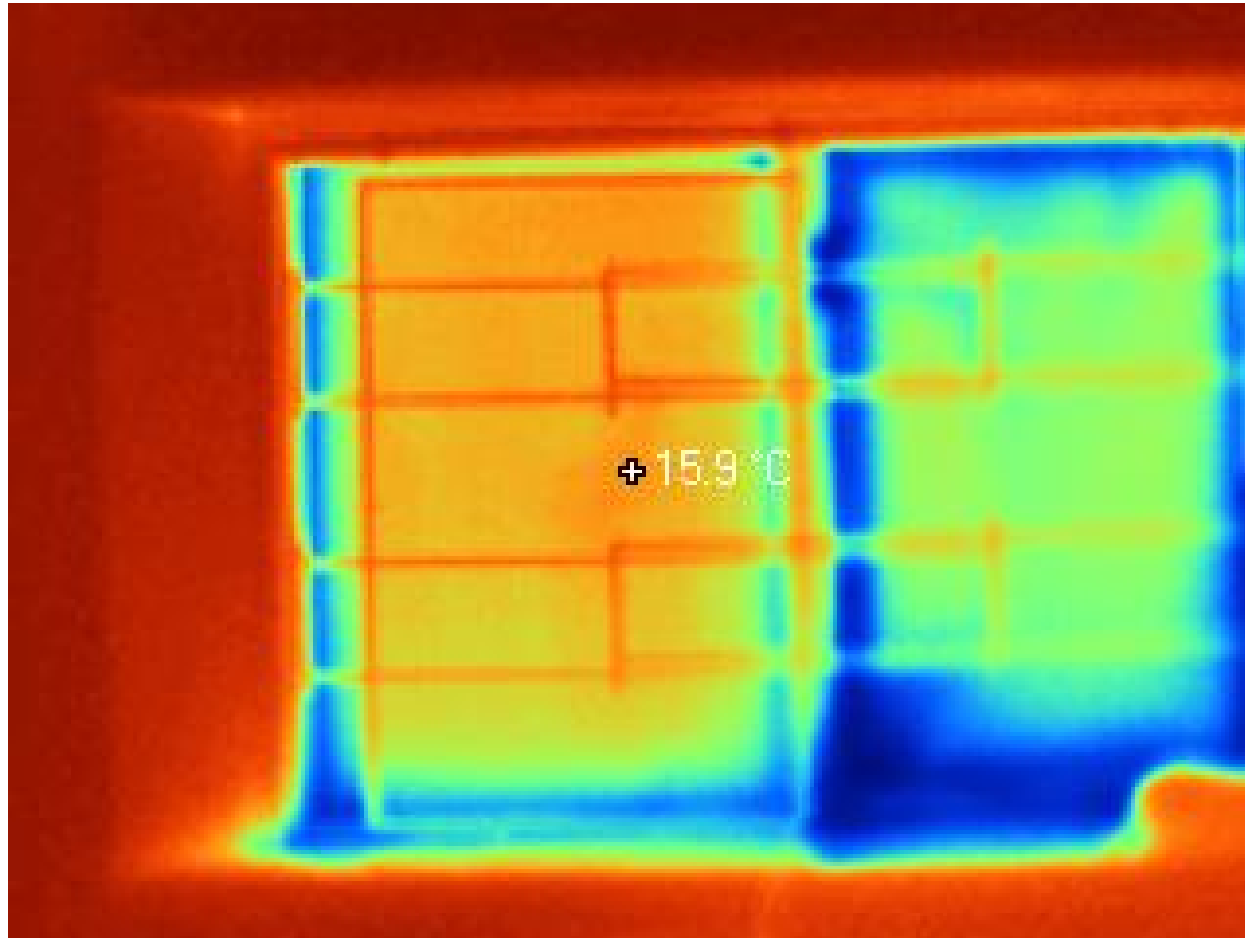
# Poorly closed window



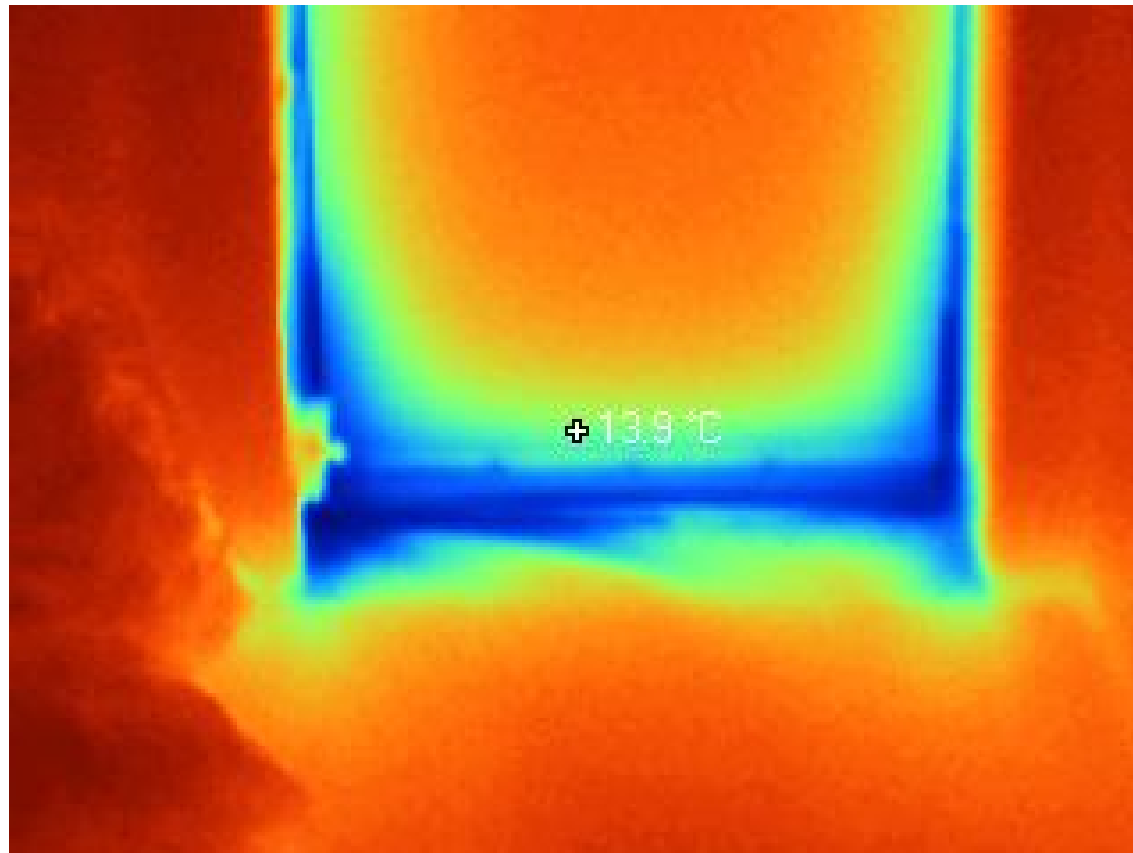
Note window temperature.  
Windows are triple glazed, low e argon filled units with non-metallic spacers



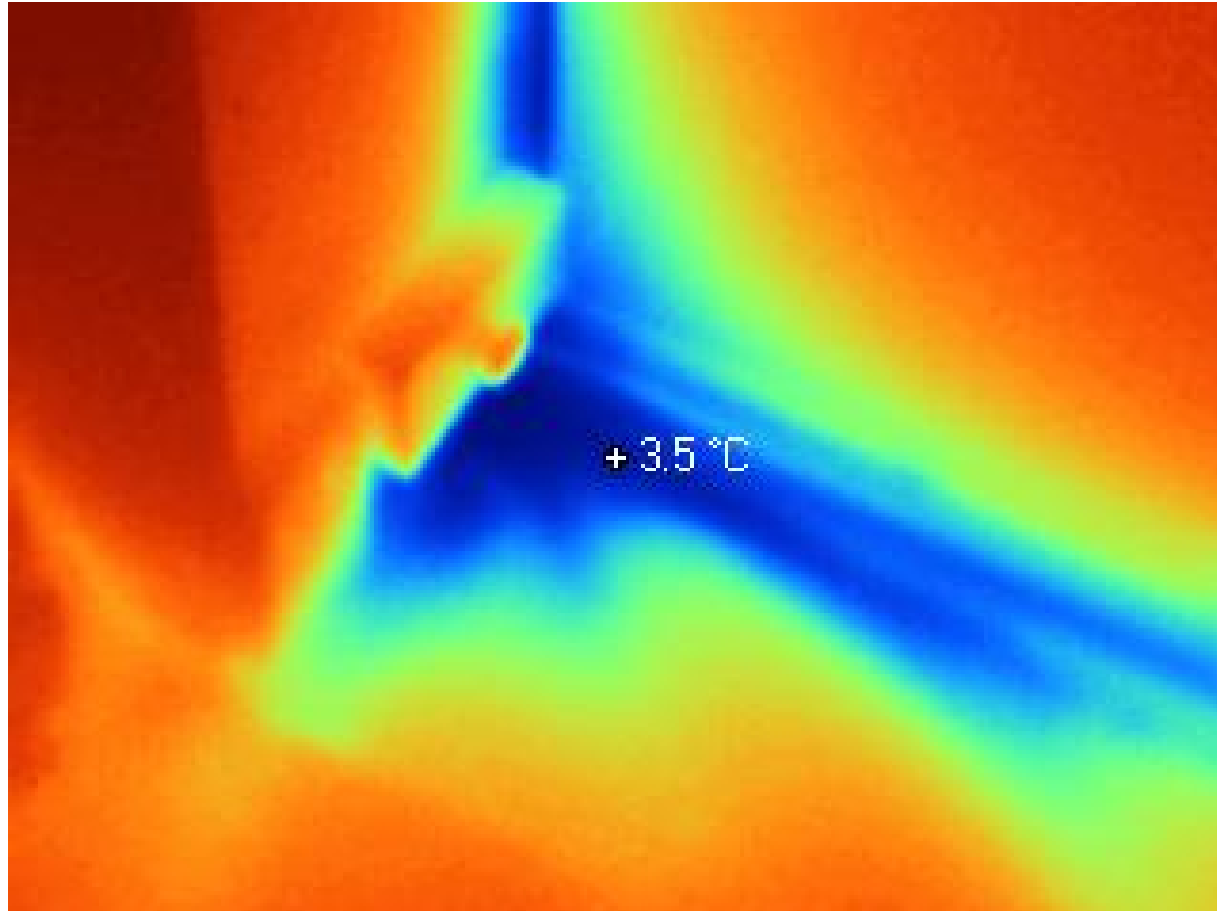
Note on the left window that the frame is cooler than the window glass.  
The frame has a poorer R value than the glass



# More door problems with air leakage

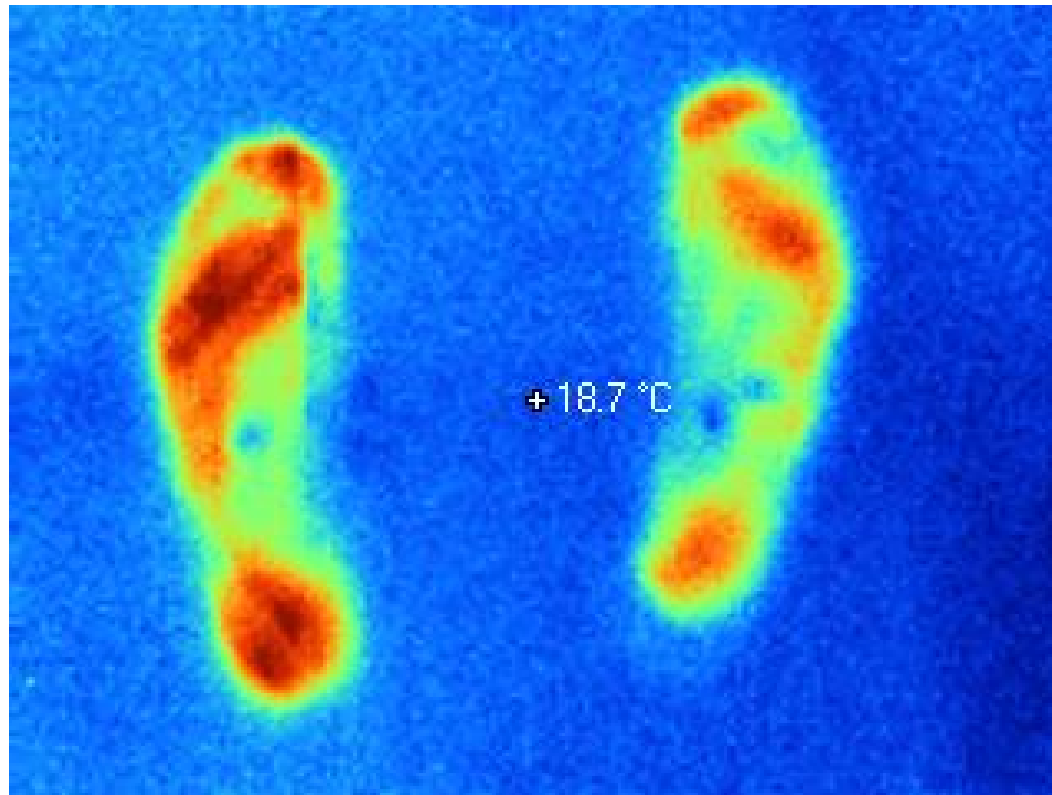


# Temperature at bottom of the door

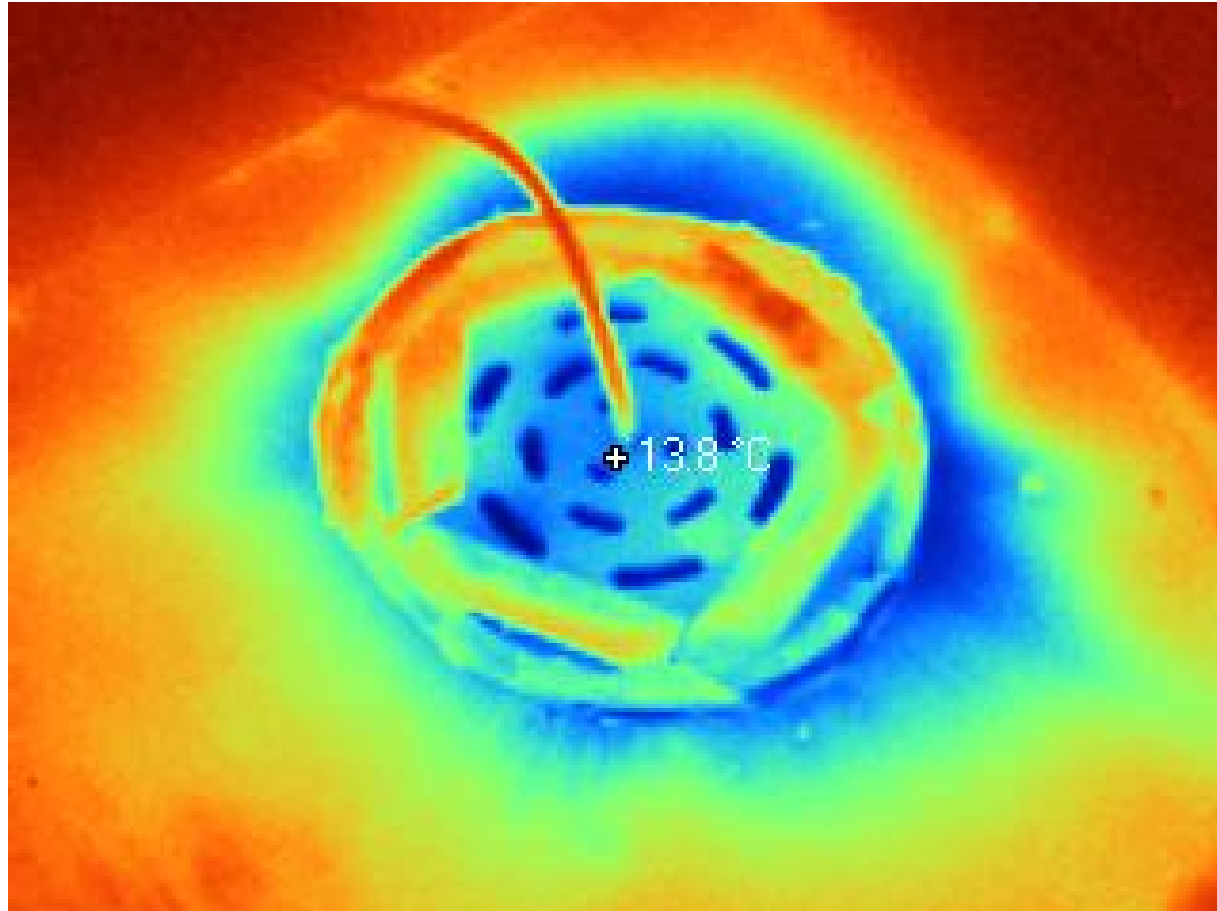




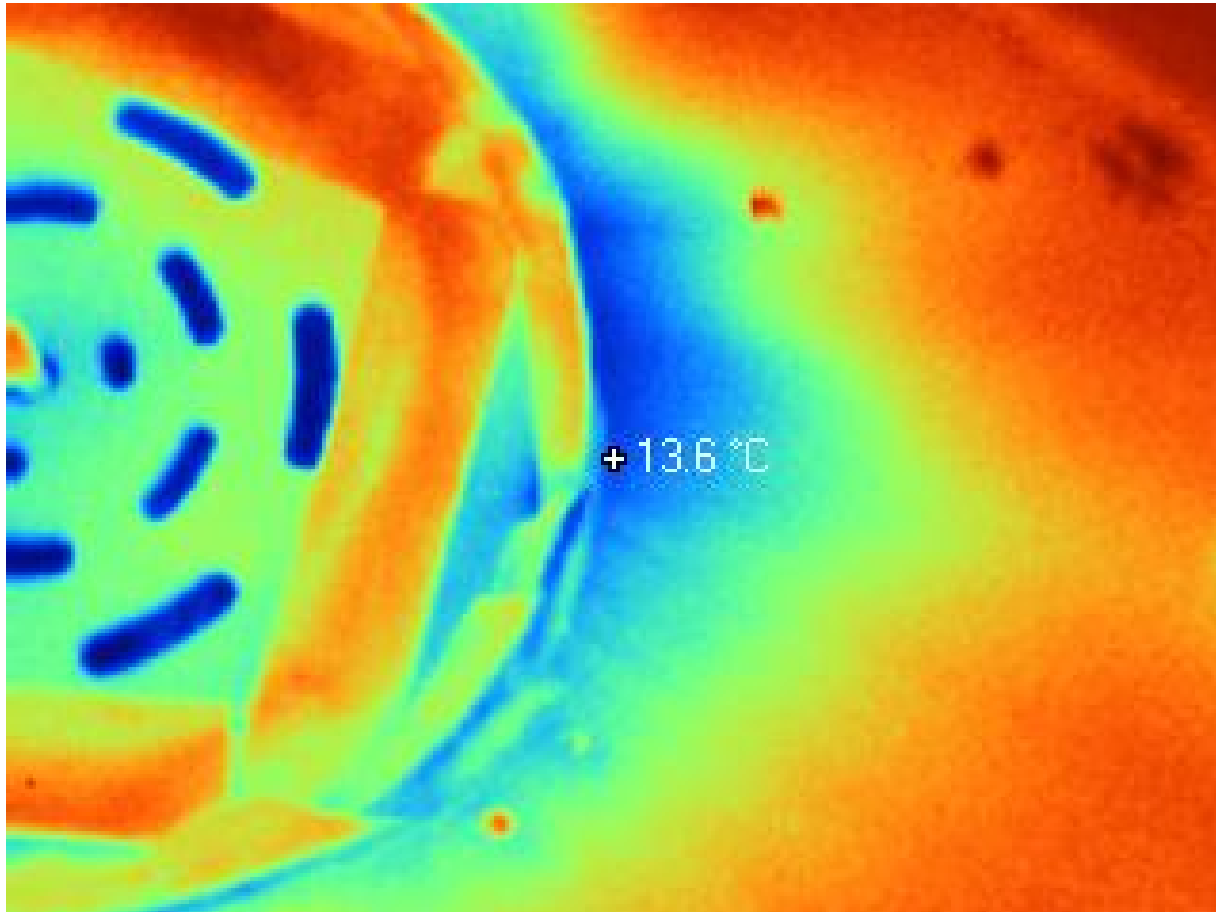
Floor imprints from moccasins  
(Skin Temperature is about 30 C)  
(But I don't have flat feet!)



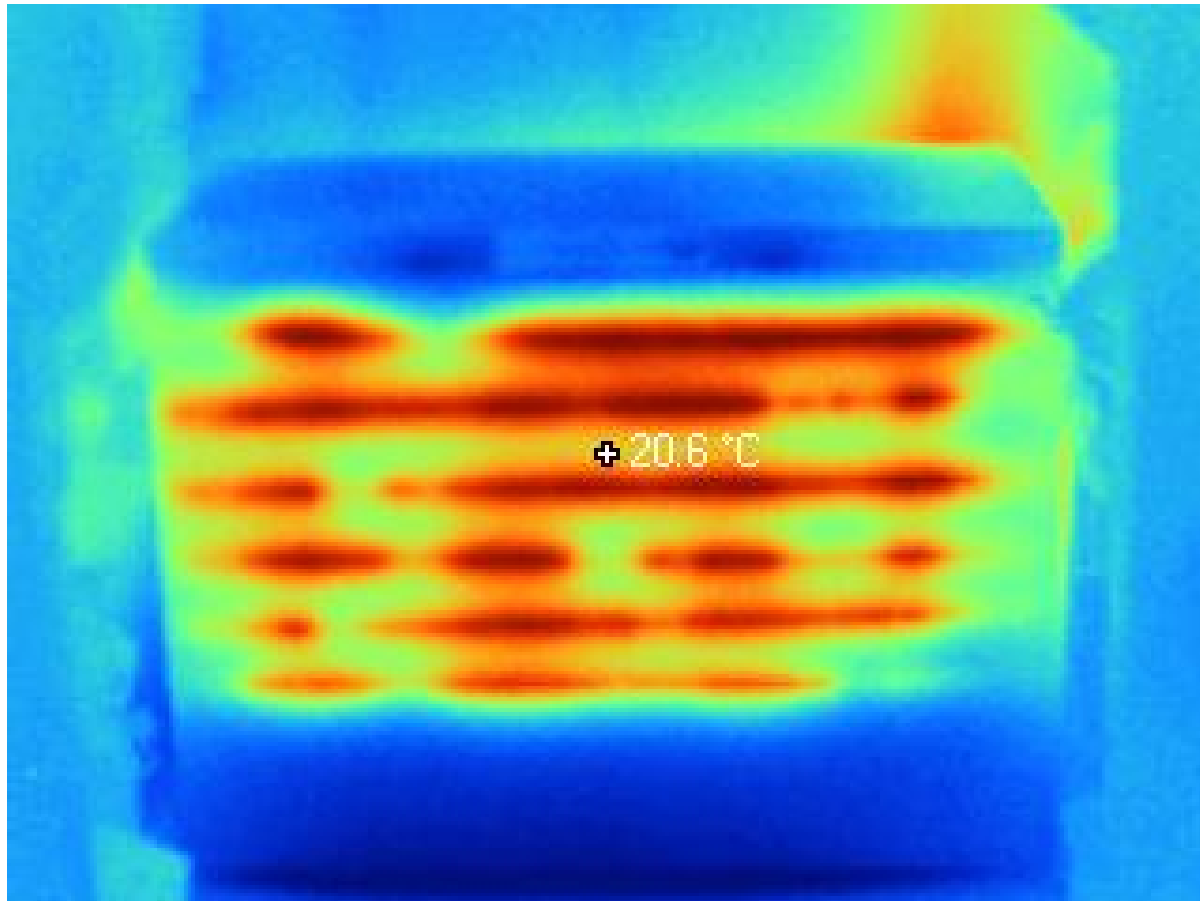
# Basement floor drain (unheated crawl space underneath)



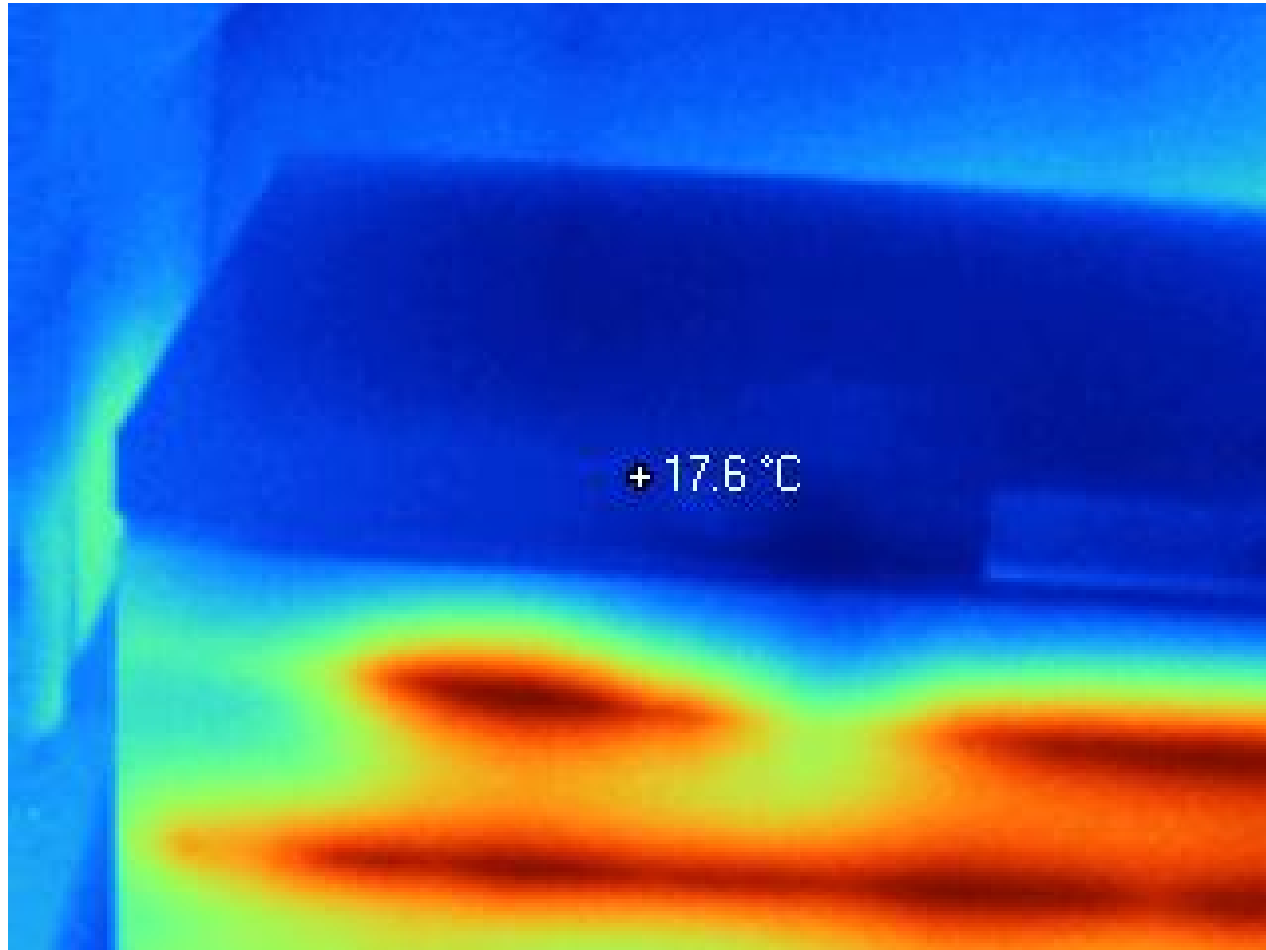
# Close-up of floor drain



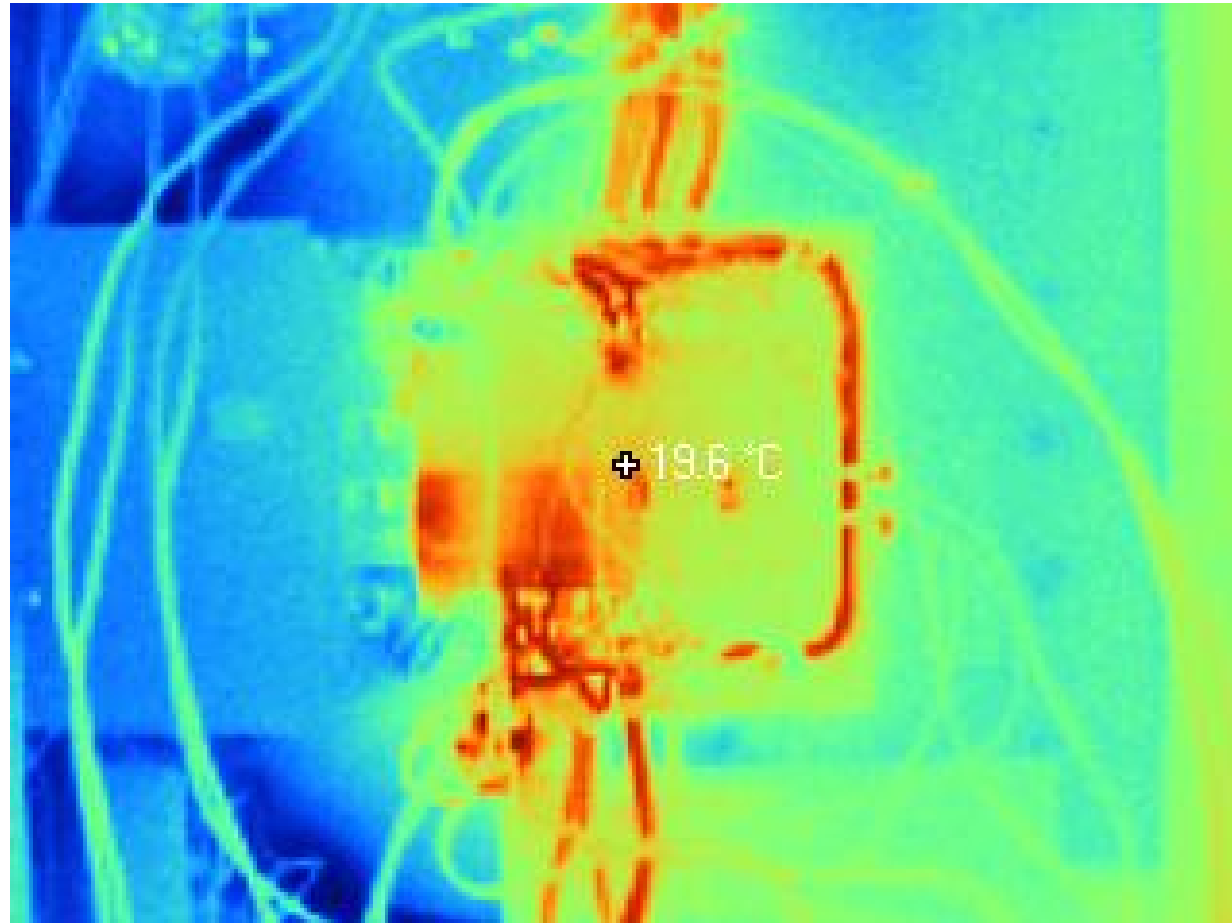
Chest Freezer in Operation  
(condenser buried in the metal skin causes the hot lines)



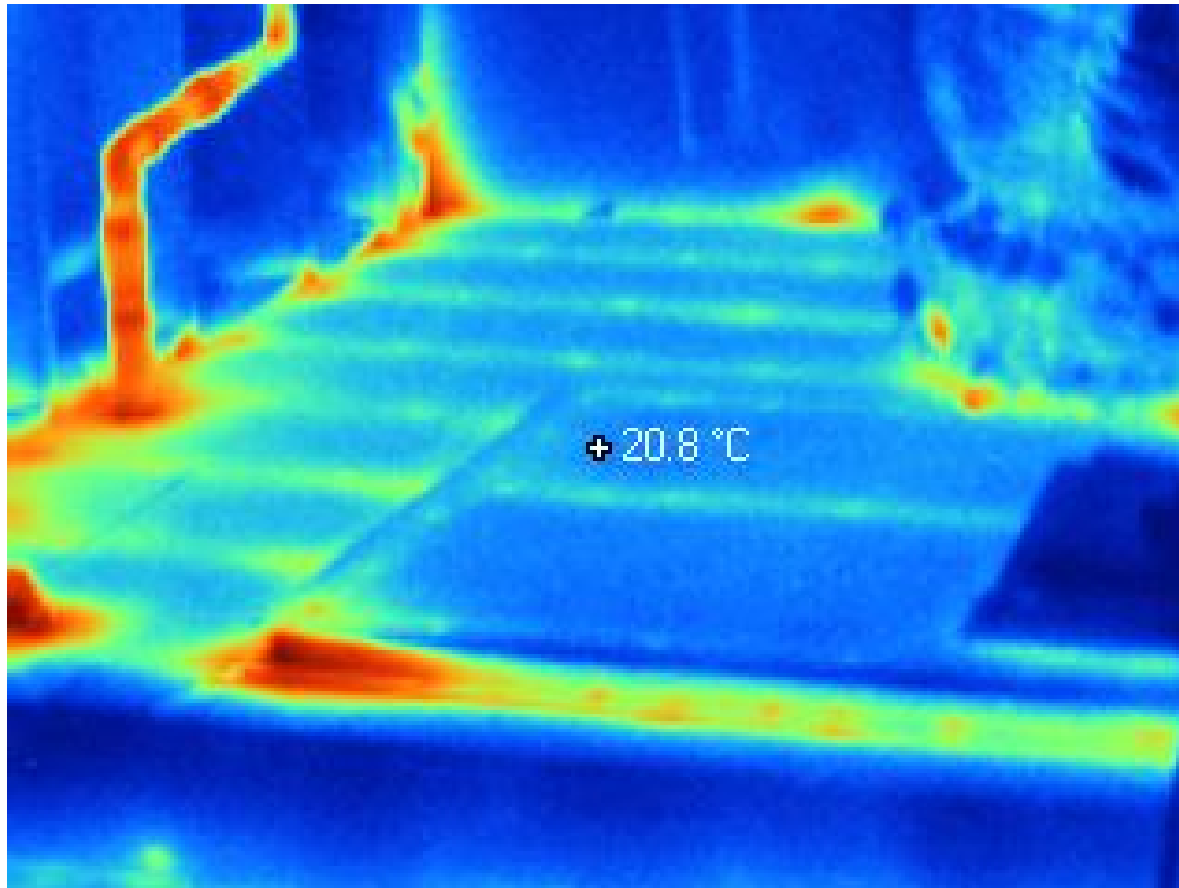
# Another view of the freezer



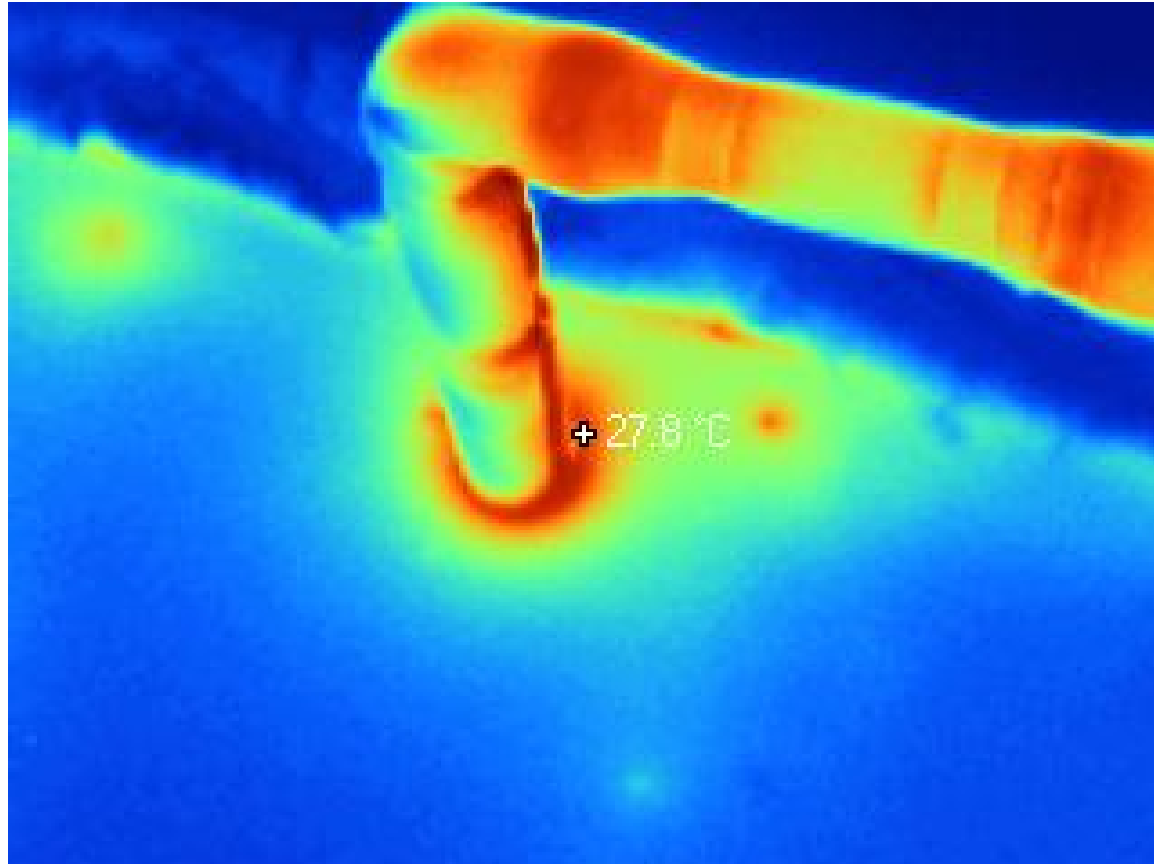
# Thermogram of the Main Electrical Panel for the house



# Top of solar hot water storage tank (water in tank at 45 C)

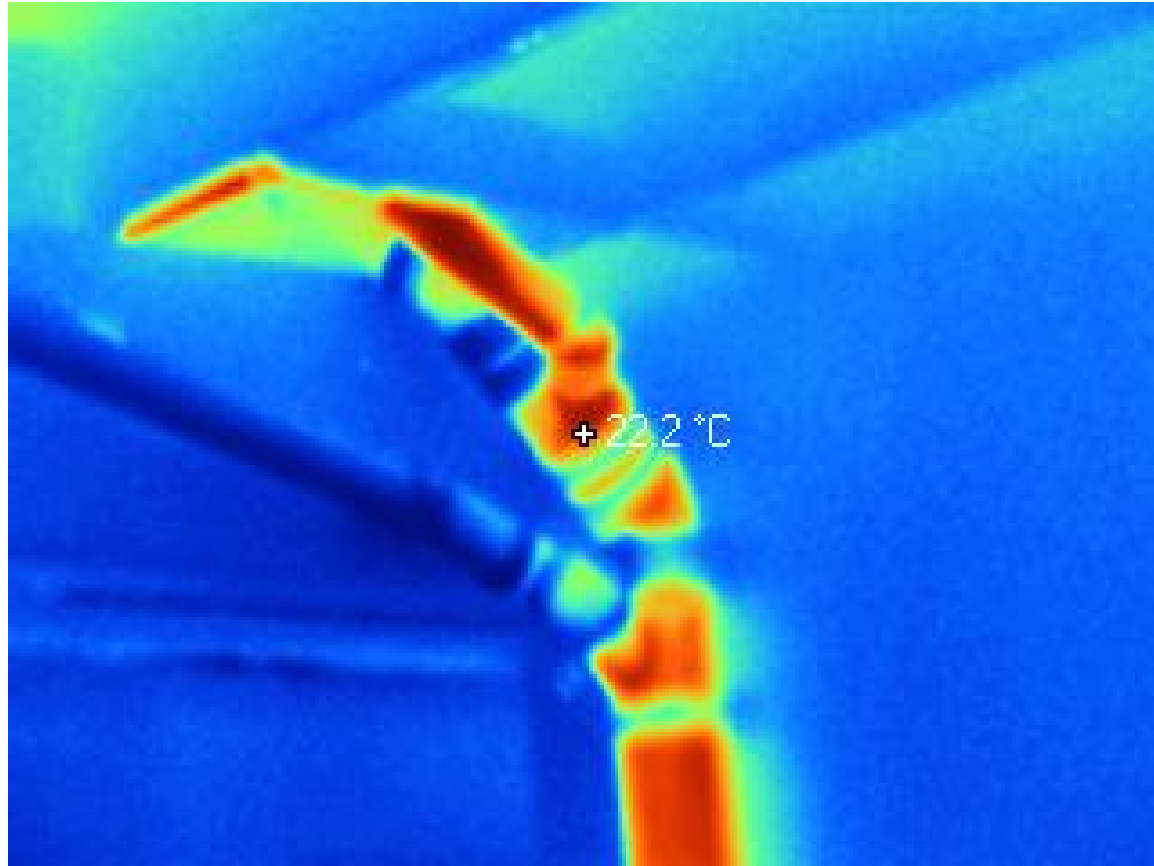


# View of Insulated Pipe exiting top of solar hot water storage tank





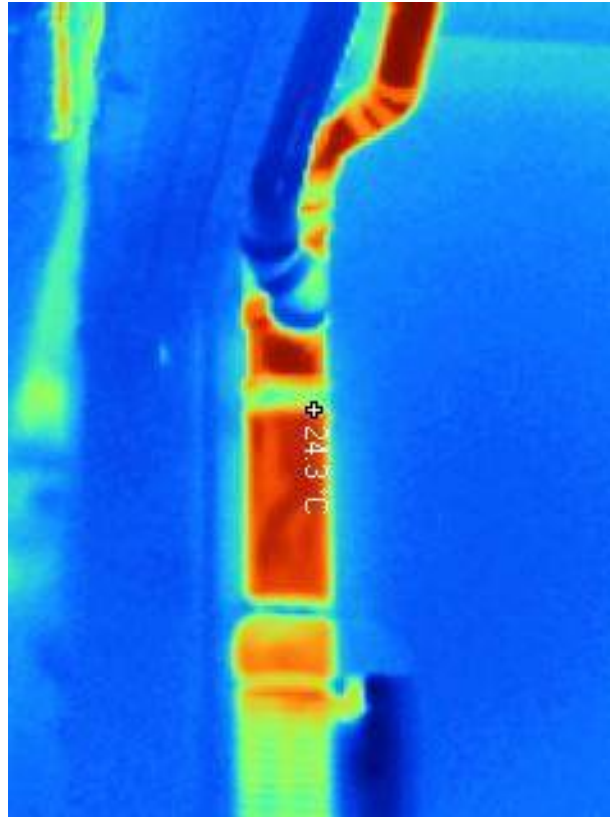
# Hot Water Flowing Through ABS Drain Pipe



# GFX Waste Water Heat Recovery Unit



# ABS Pipe & GFX Top

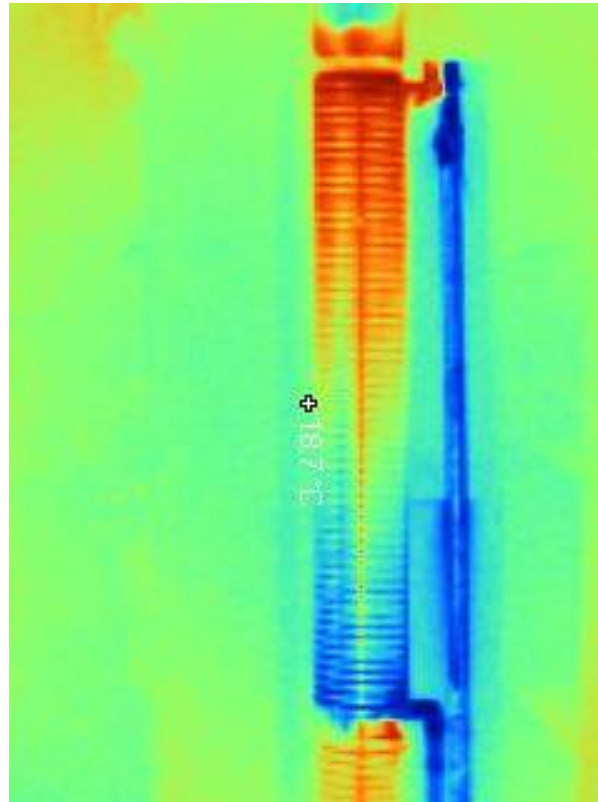


# Top Half of GFX Unit

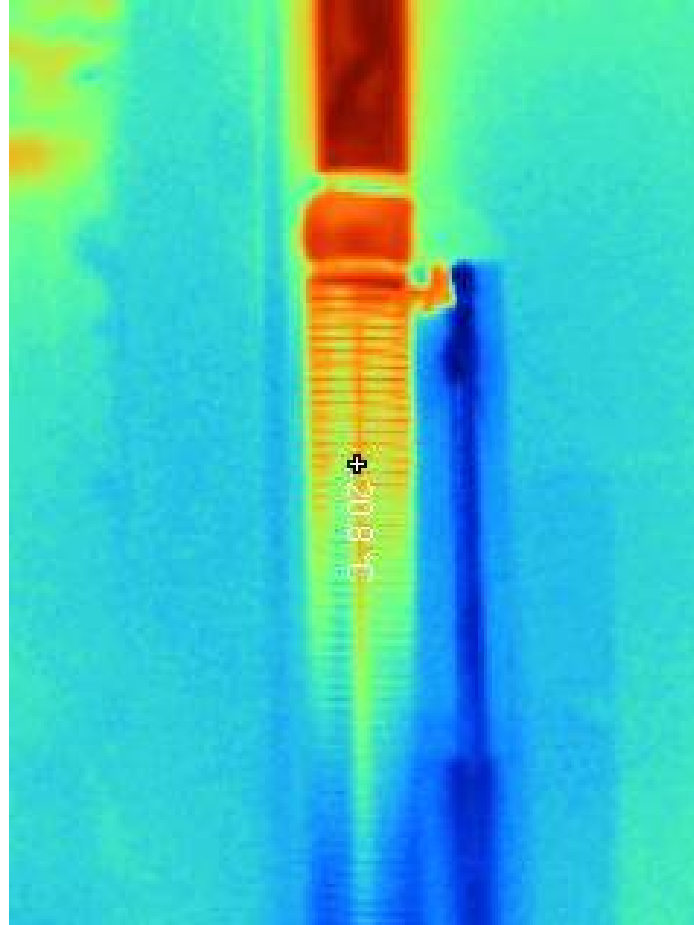
Hot Drain Water = 45 C

Cold Water In = 6 C

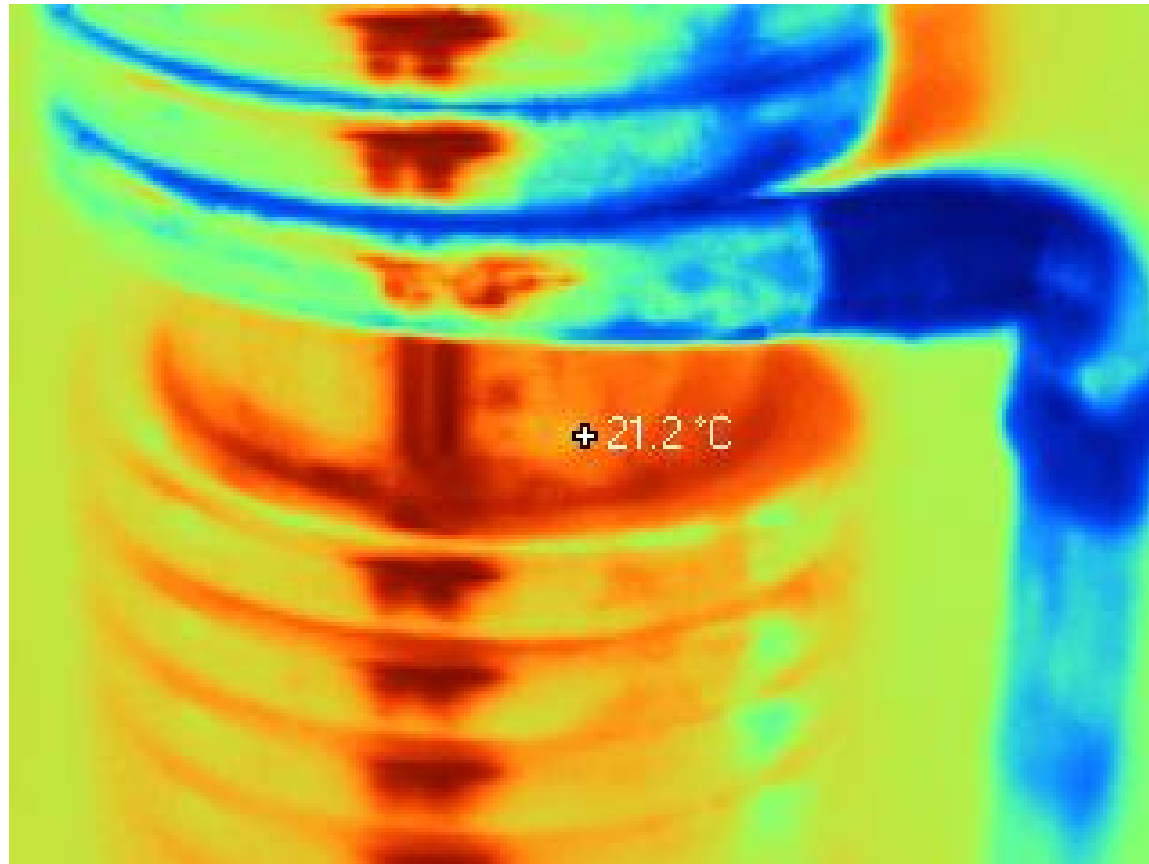
Cold Water Out = 25C



# Upper Part of GFX Waste Water Heat Recovery Unit



# GFX Midpoint



# Thermogram taken of a large mirror.







